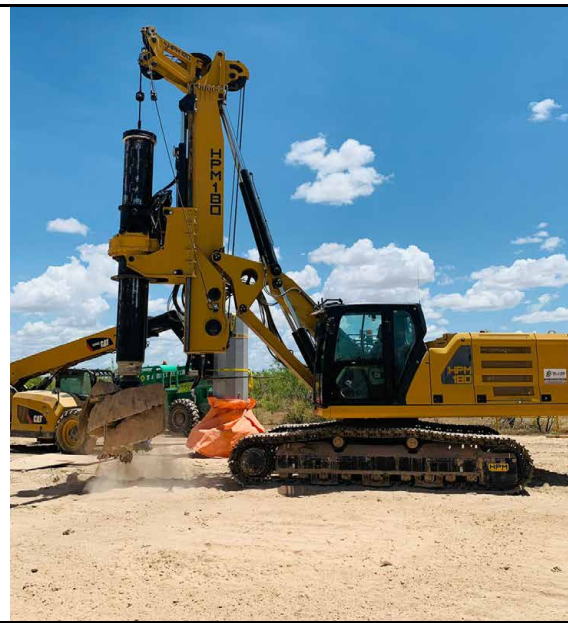
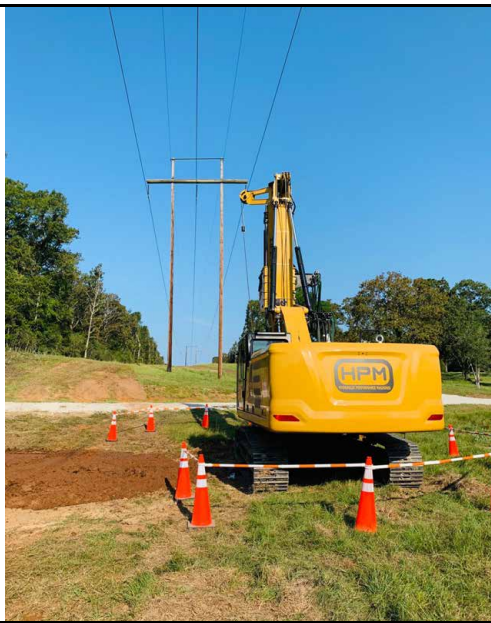


# HPM 180 Short Mast



## Base

Model	CAT 330	
Engine model	CAT C7.1	
Power rating ISO 14396	205 kW	275 hp
Displacement	7.01 l	428 in <sup>3</sup>
Fuel Tank	474 l	125.2 gal

## Undercarriage

Undercarriage Type	CAT 330	
Width:	3000 mm	9'10"
Shoe Width:	600 mm	24"

## Rotary

Rotary Torque	211 kNm	155000 lb.ft
Max Effective Torque	180 kNm	132000 lb.ft
Working Speed	7-33 rpm	
Working Gears	10	
Discharge Speed	120 rpm	
Discharge Gears	10	

## Main Winch

Max Pull Force	180 kN	40000 lbf
Starting Pull Force	205kN	46000 lbf
Rope Speed	70 m/min	230 ft/min
Rope Diameter	24 mm	15/16"

## Auxiliary Winch

Max Pull Force	75 kN	16900 lbf
Rope Speed	80 m/min	260 ft/min
Rope Diameter	15 mm	19/32"

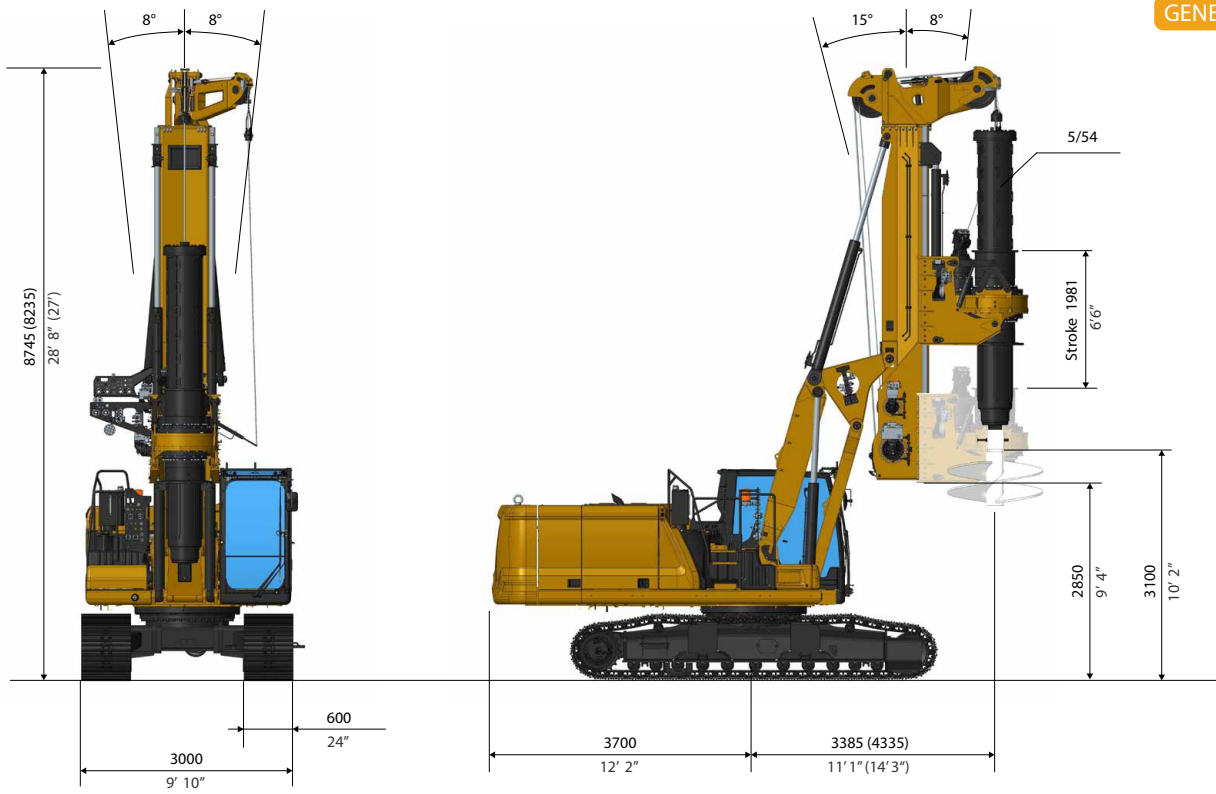
## Crowd System

Crowd Type:	Cylinder Crowd Pull	
Pull Force:	310 kN	70000 lbf
Push Force	180 kN	40000 lbf

## Drilling Data

Standard Kelly bar:	5/54	
Drilling Depth:	17 m	54 ft
Drilling Diam.:	1800 mm	6 ft
Max Drilling Diam.:	3000 mm	11 ft

*\*Different Kelly-Bar available on request*

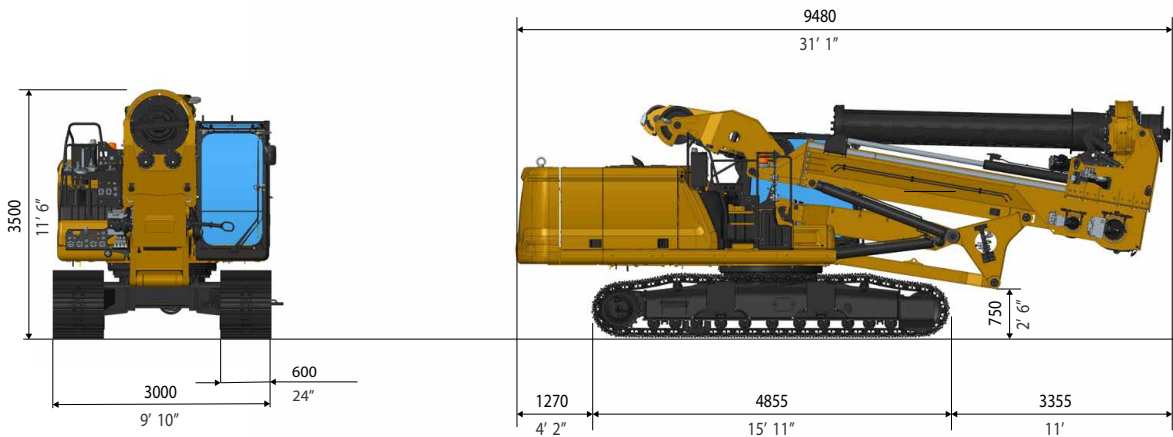


**Operating Weight**

Weight with 5/54 KB      38 ton    84200 lb

**Transport Weight**

Weight with 5/54 KB      38 ton  
84200 lb



**MAIN STANDARD EQUIPMENT**

- Multifunctional HPM Computer
- Travel Alarm
- Cameras
- Automatic Mast Verticalization
- Auto Alignment with memory function

- Rotary Speed Control
- 10 Gears System
- Remote Diagnostics/Updates
- Removable Counterweight

**OPTIONAL EQUIPMENT**

- Aux. Swing Brake
- Casign Oscillator Predisposition
- Universal Casing Joint
- Walking Platform
- Remote Control
- Self Erecting Counterweight
- FOPS cab
- Biodegradable Hydraulic Oil
- Central Lubrication System
- Extendable Undercarriage

*Design developments and process improvements may require the specification and materials to be updated and changed without prior notice or liability.*

*These and the technical data are provided as indicative information only, with any errors and misprints reserved.*