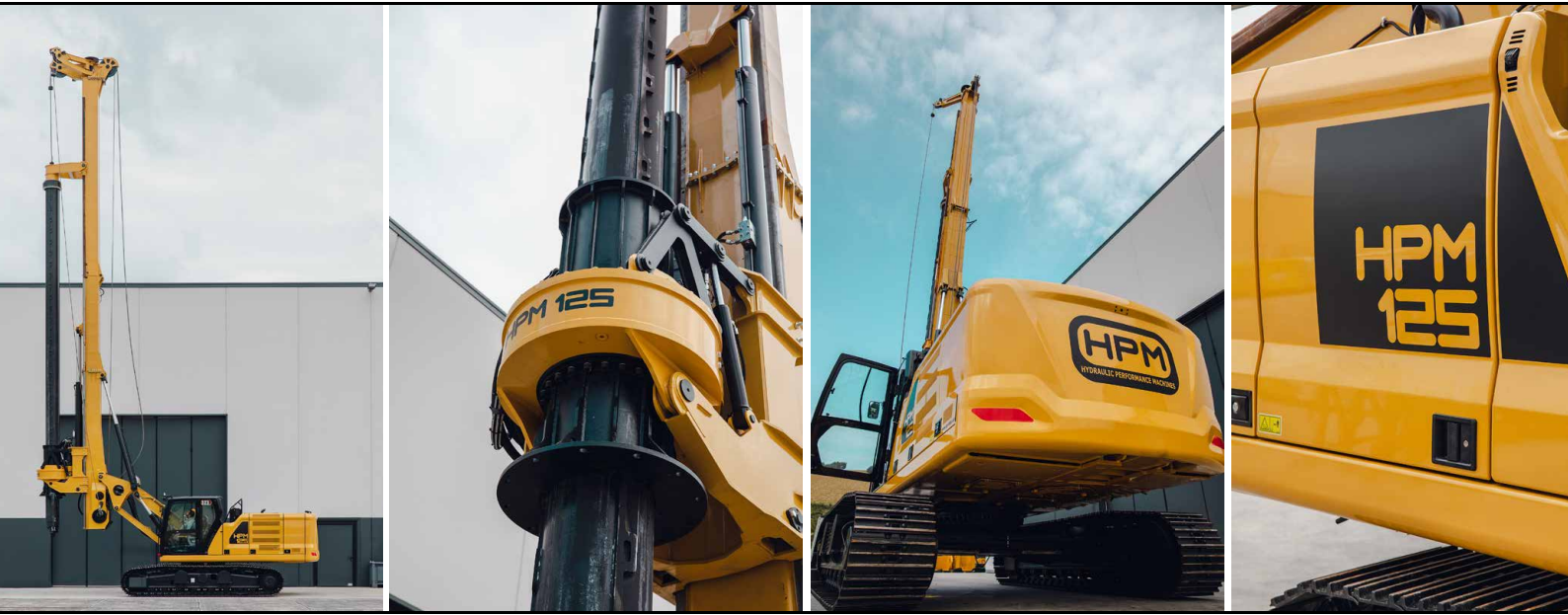


HPM125



Base

Model	CAT 323	
Engine model	CAT C7.1	
Power rating ISO 14396	129 kW	173 hp
Displacement	7.01 l	428 in ³
Fuel Tank	345 l	86.6 gal

Undercarriage

Undercarriage Type	Variable Width	
Width:	2540-3600mm	8'4" - 11'10"
Shoe Width:	600mm	23" 5/8

Rotary

Rotary Torque	153 kNm	110600 lb.ft
Max Effective Torque	130 kNm	94000 lb.ft
Working Speed	7-28 rpm	
Working Gears	10	
Discharge Speed	40-120 rpm	
Discharge Gears	10	

Main Winch

Max Pull Force	180 kN	40000 lbf
Starting Pull Force	205 kN	46000 lbf
Rope Speed	70 m/min	230 ft/min
Rope Diameter	24 mm	15/16

Auxiliary Winch

Max Pull Force	75 kN	16900 lbf
Rope Speed	65 m/min	215 ft/min
Rope Diameter	15 mm	19/32"

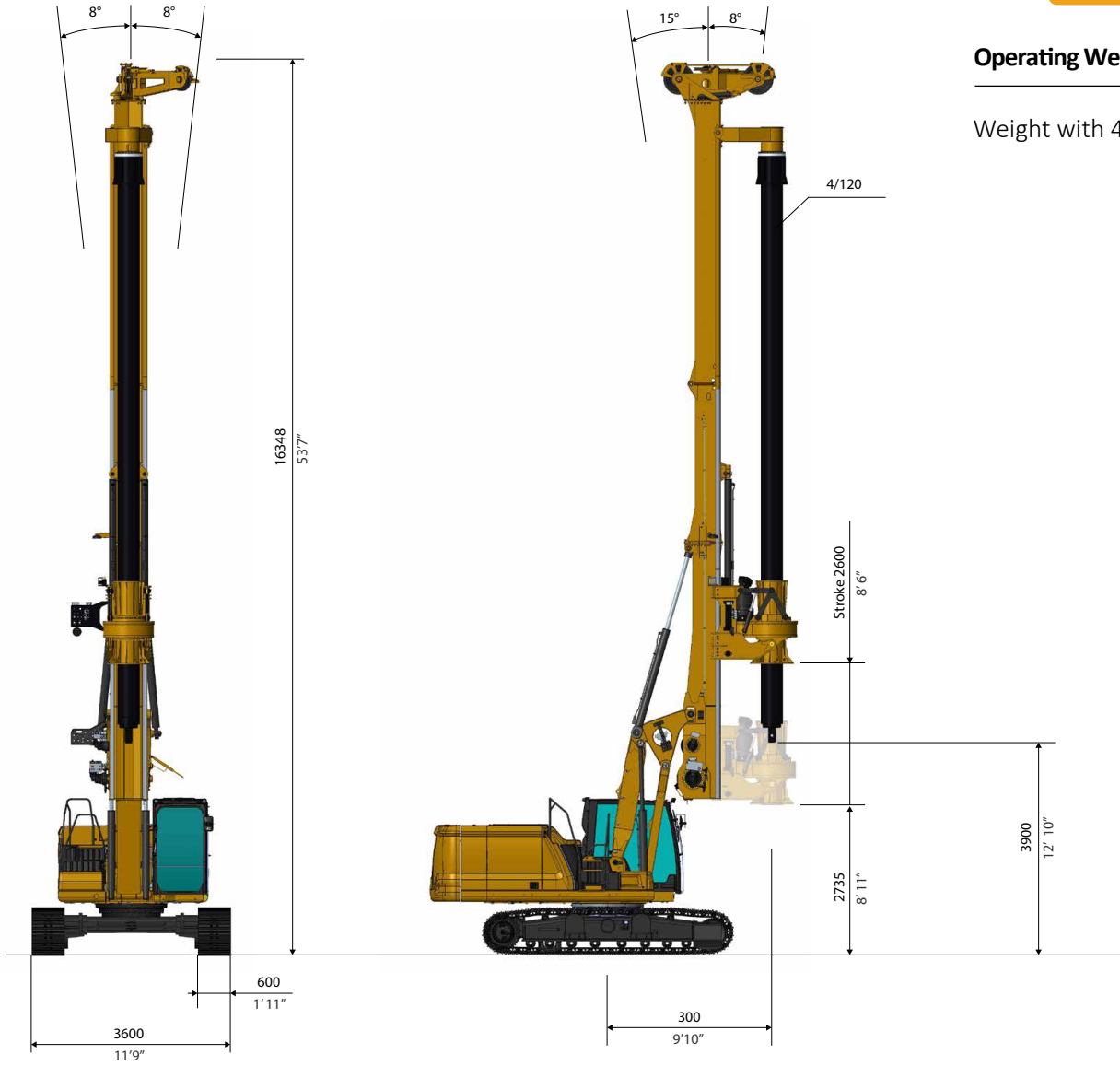
Crowd System

Crowd Type:	Cylinders Crowd Pull	
Pull Force:	270 kN	61000 lbf
Push Force	180 kN	40000 lbf

Drilling Data

Standard Kelly bar:	4/120	
Drilling Depth:	36.5 m	120 ft
Drilling Diam.:	1800 mm	6 ft
Max Drilling Diam.:	3000 mm	10 ft

**Different Kelly-Bar available on request*



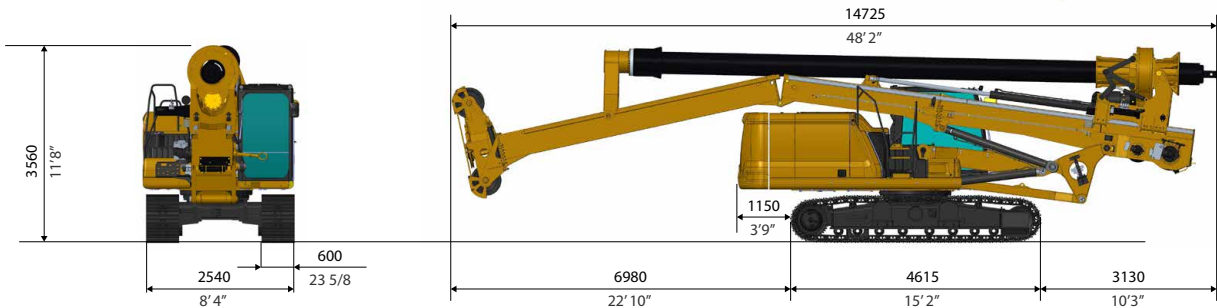
Operating Weight

Weight with 4/120 KB 36 ton
 79400 lb

TRANSPORT DIMENSIONS

Transport Weight

Weight with 4/120 KB 36 ton 79400 lb



MAIN STANDARD EQUIPMENT

- Multifunctional HPM Computer
- Travel Alarm
- Cameras
- Automatic Mast Verticalization
- Auto Alignment with memory function
- Rotary Speed Control
- 10 Gears System
- Remote Diagnostics/Updates
- Removable Counterweight
- Extendable Undercarriage

OPTIONAL EQUIPMENT

- Winch Crowd System
- Aux. Swing Brake
- Casign Oscillator Predisposition
- Universal Casing Joint
- Walking Platform
- Remote Control
- Self Erecting Counterweight
- FOPS cab
- Biodegradable Hydraulic Oil
- Central Lubrication System
- CFA Kit
- Short Mast Kit

Design developments and process improvements may require the specification and materials to be updated and changed without prior notice or liability.

These and the technical data are provided as indicative information only, with any errors and misprints reserved.