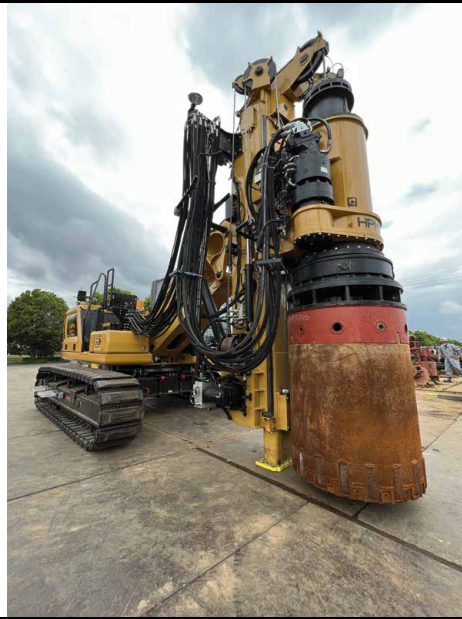
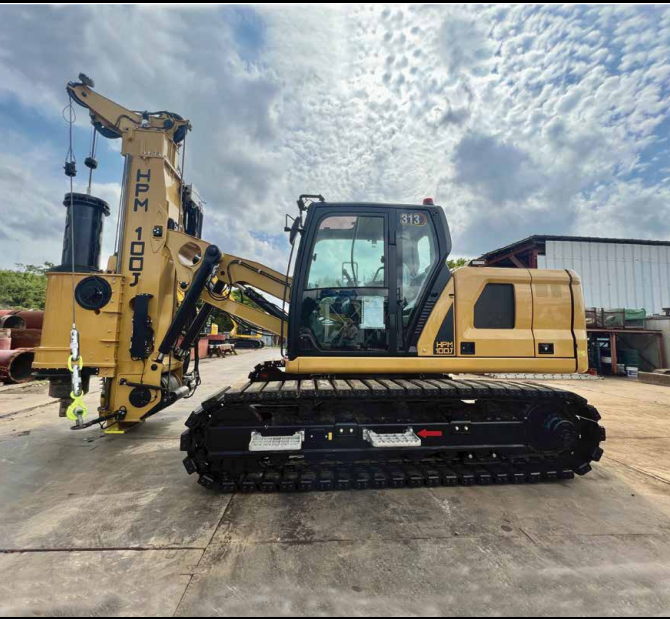


# HPM 100J Short Mast



## Base

Model	CAT 313	
Engine model	CAT C3.6	
Power rating ISO 14396	82 kW	108 hp
Displacement	3.6 l	220 in <sup>3</sup>
Fuel Tank	258 l	68.2 gal

## Undercarriage

Undercarriage Type	Variable Width	
Width:	2500-3300mm	8'2" - 10'10"
Shoe Width:	500mm	20"

## Rotary

Rotary Torque	123 kNm	90700 lb.ft
Max Effective Torque	105 kNm	77450 lb.ft
Working Speed	8-28 rpm	
Working Gears	10	
Discharge Speed	50-125 rpm	
Discharge Gears	10	

## Main Winch

Max Pull Force	120 kN	27000 lbf
Starting Pull Force	130 kN	29250 lbf
Rope Speed	70 m/min	230 ft/min
Rope Diameter	22 mm	7/8"

## Auxiliary Winch

Max Pull Force	30 kN	6750 lbf
Rope Speed	55 m/min	180 ft/min
Rope Diameter	12 mm	15/35"

## Crowd System

Crowd Type:	Winch with Pull in 3°	
Pull Force:	201 kN	45200 lbf
Push Force	100 kN	22500 lbf

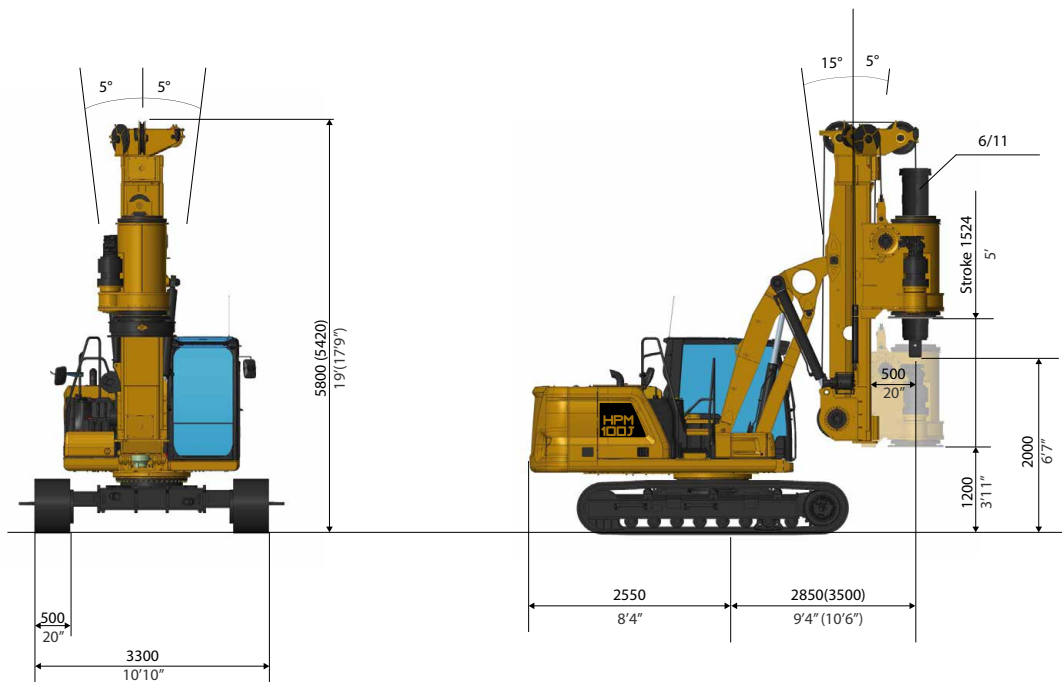
\*Cylinder Crowd System available on request

## Drilling Data

Standard Kelly bar:	6/11	
Drilling Depth:	11 m	36 ft
Drilling Diam.:	1000mm	3.28 ft

\*Different Kelly-Bar available on request

\*\* Other drilling diameters available on request

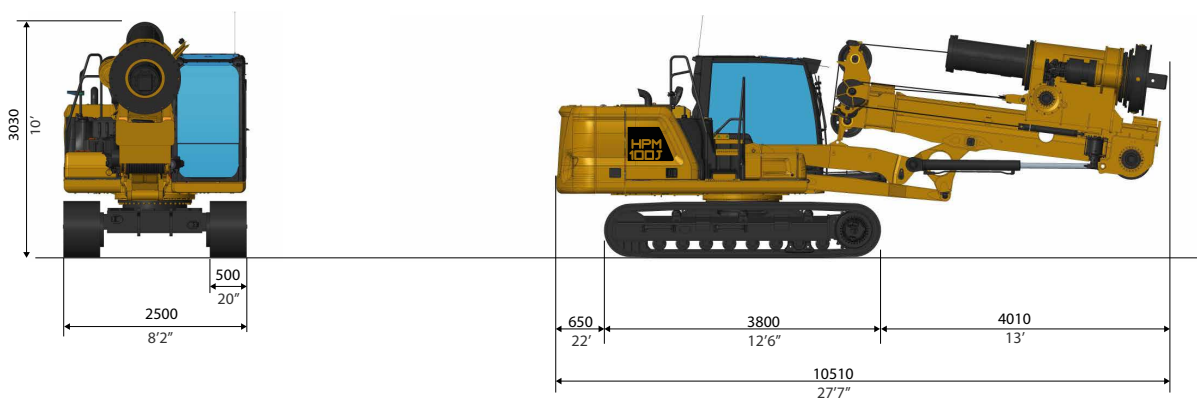


**Transport Weight**

Weight with 6/10 KB      24.5 ton      54000 lb

**Transport Weight**

Weight with 6/10 KB      24.5 ton      54000 lb



**MAIN STANDARD EQUIPMENT**

- Multifunctional HPM Computer
- Travel Alarm
- Cameras
- Automatic Mast Verticalization
- Auto Alignment with memory function

- Rotary Speed Control
- 10 Gears System
- Remote Diagnostics/Updates
- Removable Counterweight
- Extendable Undercarriage

**OPTIONAL EQUIPMENT**

- Cylinder Crowd System
- Aux. Swing Brake
- Casign Oscillator Predisposition
- Universal Casing Joint
- Walking Platform
- Remote Control
- Self Erecting Counterweight
- FOPS cab
- Biodegradable Hydraulic Oil
- Central Lubrication System
- CFA Kit
- Long Mast Kit

*Design developments and process improvements may require the specification and materials to be updated and changed without prior notice or liability.*

*These and the technical data are provided as indicative information only, with any errors and misprints reserved.*